

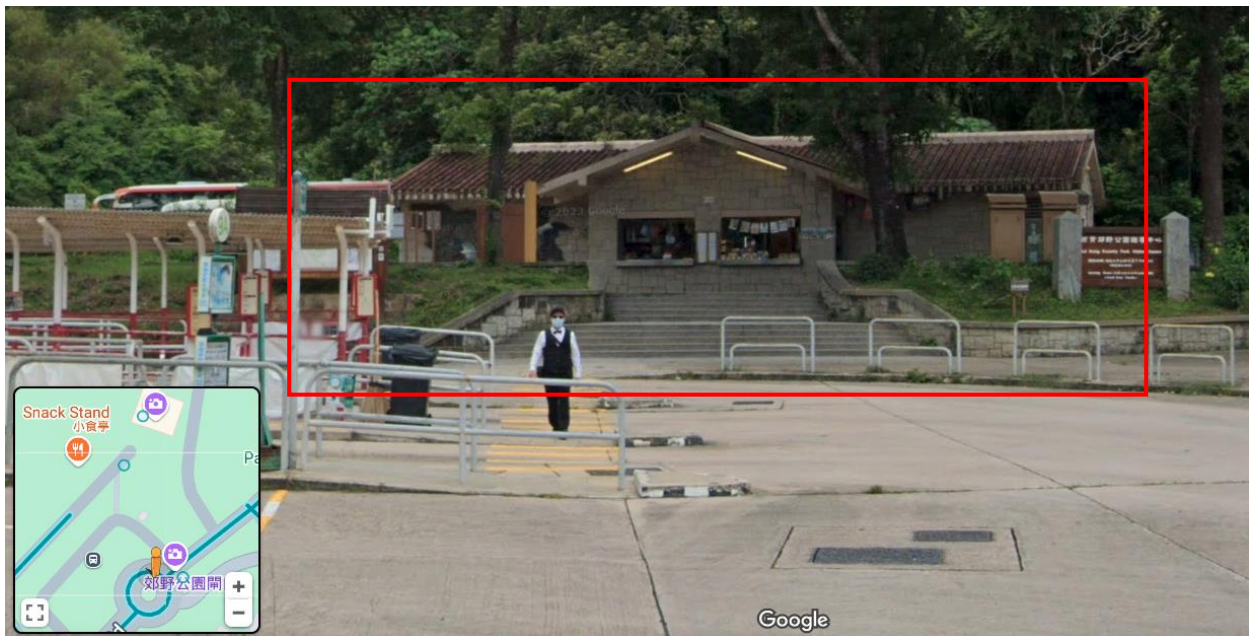
STAGE 1 – Pak Tam Chong to Long Ke Wan / 第一段：北潭涌至浪茄

Distance: 11KM

START: Pak Tam Chong bus stop/ near the kiosk

起點：北潭涌巴士站/靠近小食亭

(click here for Google Maps location)



FINISH: After passing distance post M20, a wooden board before turning down to Long Ke Wan Beach

終點：經過 M20 後，在轉向浪茄灣之前的指示板前

(click here for Google Maps location)



STAGE 2 – Long Ke Wan to Pak Tam Au / 第二段 - 浪茄至北潭坳

Distance: 13.5KM

START: After passing distance post M20, a wooden board before turning down to Long Ke Wan Beach
起點: 經過 M20 後，在轉向浪茄灣之前的指示板前
([click here for Google Maps location](#))



FINISH: Public Toilets at Pak Tam Road Junction
終點: 北潭路交界處的公共廁所
([click here for Google Maps location](#))



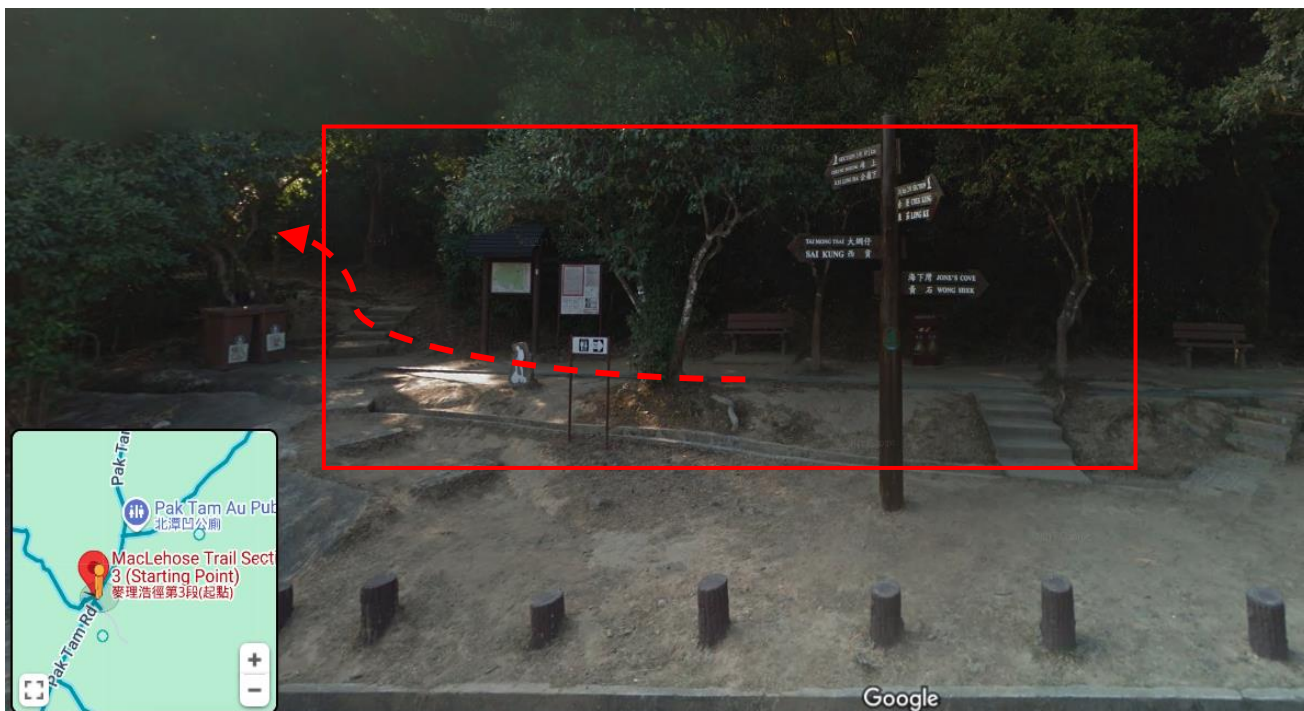
STAGE 3 – Pak Tam Au to Kei Ling Ha / 第三段 - 北潭坳至企嶺下

Distance: 9KM

START: Across Pak Tam Au Bus Stop, 120m South of Pak Tam Au Public Toilets

起點: 北潭凹巴士站對面，北潭凹公廁向南行 120m 方向

(click here for Google Maps location)



FINISH: Public Toilets at Sai Sha Road BBQ Area Site 5

終點: 西沙路 5 號燒烤場旁的公廁

(click here for Google Maps location)



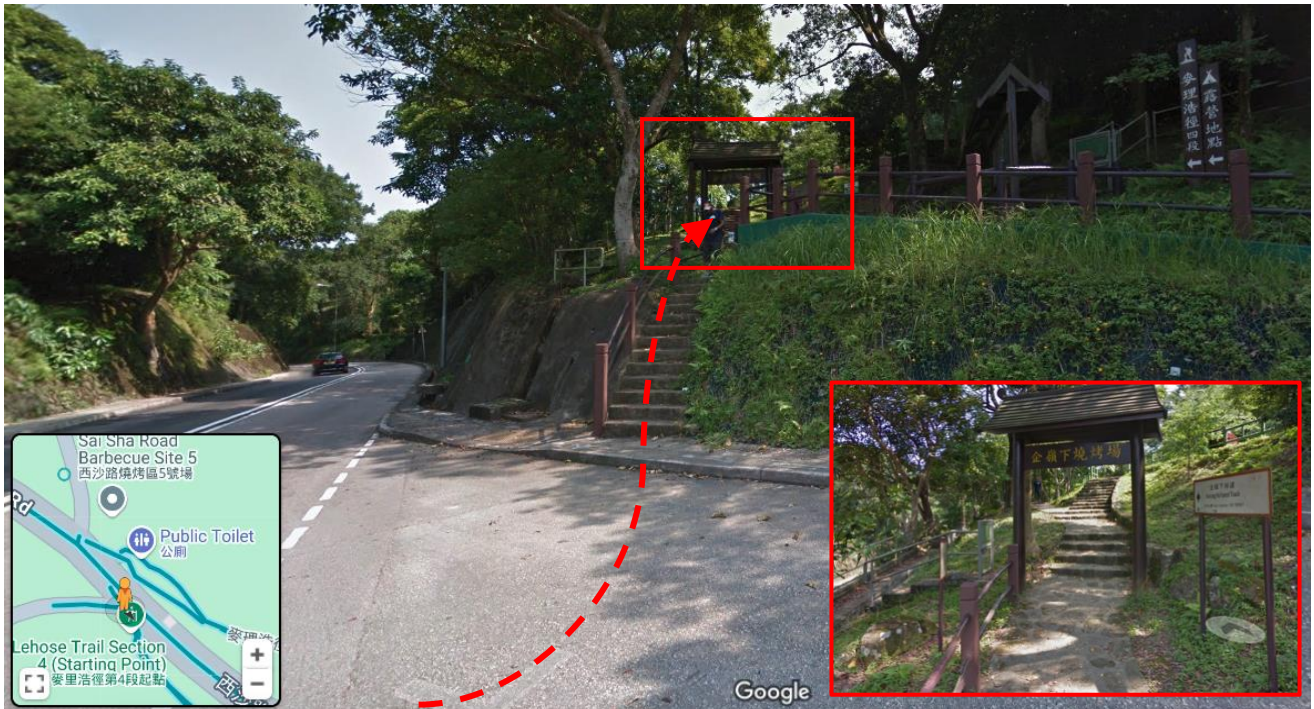
STAGE 4 – Kei Ling Ha to Tai Lo Shan (Gilwell Campsite) /
第四段 - 企嶺下至大老山 (基維爾營地)

Distance: 12.7KM

START: Across public toilets at Sai Sha Road BBQ Area Site 5, Kei Ling Ha Forest Trail

起點: 從西沙路 5 號燒烤場旁的公廁過馬路，向企嶺下林路方向走

(click here for Google Maps location)



FINISH: Junction near Gilwell Campsite

終點: 靠近基維爾營地的路口

(click here for Google Maps location)



STAGE 5 – Tai Lo Shan (Gilwell Campsite) to Tai Po Road

第五段 - 大老山 (基維爾營地)至大埔道

Distance: 10.6KM

START: Junction near Gilwell Campsite

起點: 靠近基維爾營地的路口

(click here for Google Maps location)



FINISH: Junction at Tai Po Road, by Lion Rock Country Park Sign

終點: 大埔道交界處, 獅子山野野公園的指示牌旁

(click here for Google Maps location)



STAGE 6 – Tai Po Road to Shing Mun Reservoir BBQ Site

第六段：大埔道至城門水塘燒烤場

Distance: 4.6KM

START: Monkey Mountain Public Toilet on Tai Po Road

起點：大埔道旁的馬騮山公廁

(click here for Google Maps location)



FINISH: Shing Mun Reservoir BBQ Area Site No.5

終點：城門水塘 5 號燒烤場

(click here for Google Maps location)



STAGE 7 –Shing Mun Reservoir BBQ Site to Lead Mine Pass

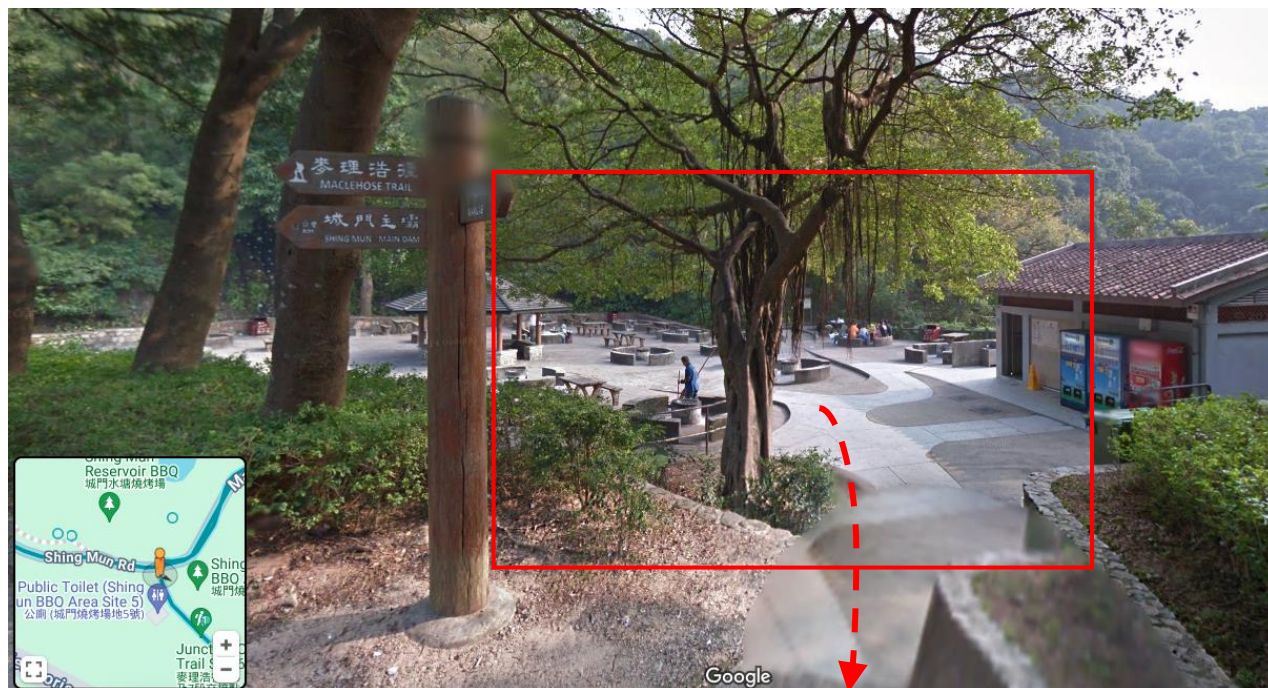
第七段：大埔道至城門水塘燒烤場

Distance: 6.2KM

START: Shing Mun Reservoir BBQ Area Site 5

起點：城門水塘 5 號燒烤場

(click here for Google Maps location)



FINISH: Lead Mine Pass Pavilion (by toilets)

終點：鉛礦坳涼亭 (公廁旁)

(click here for Google Maps location)



STAGE 8 – Lead Mine Pass to Route Twisk

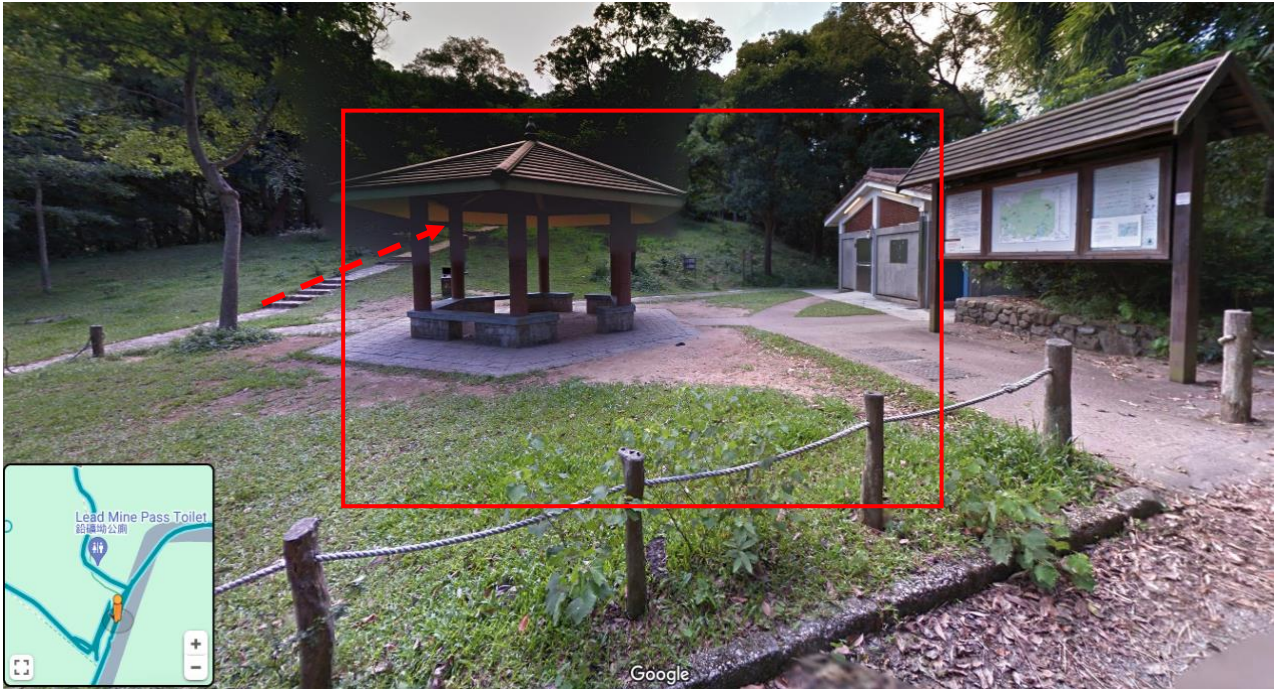
第八段：鉛礦坳至荃錦公路

Distance: 9.7KM

START: Lead Mine Pass Pavilion (by toilets)

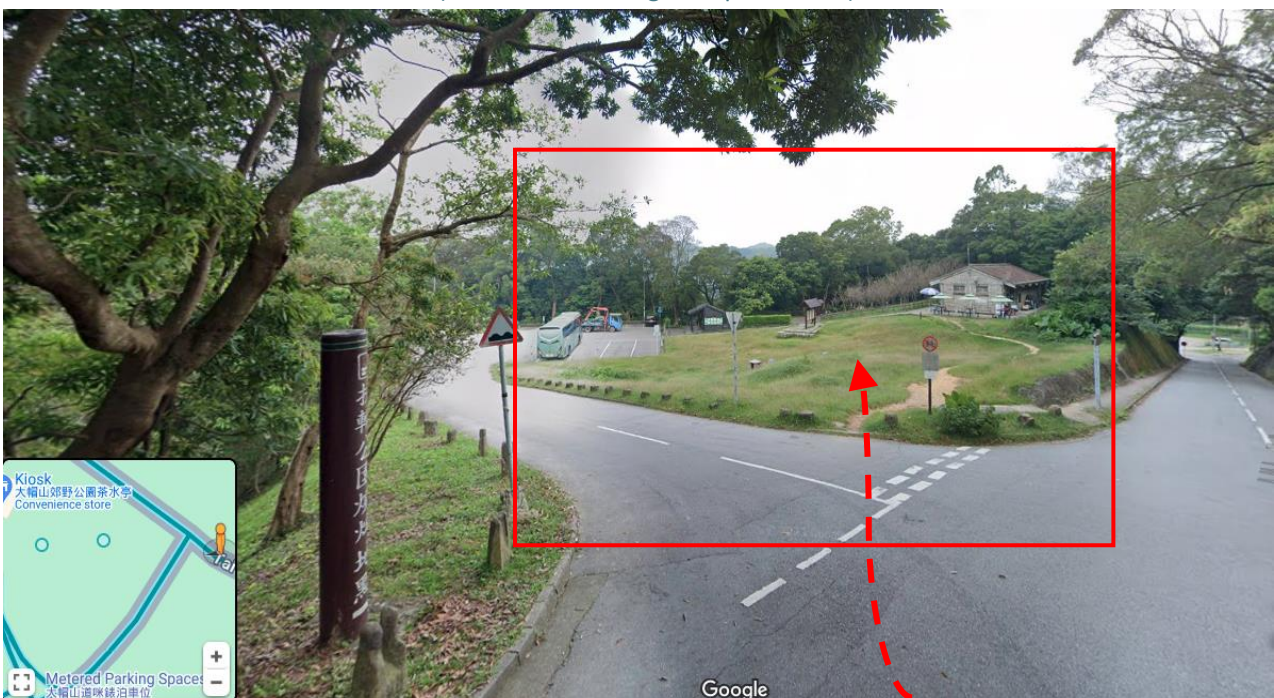
起點：鉛礦坳涼亭（公廁旁）

(click here for Google Maps location)



FINISH: Tai Mo Shan Kiosk, Rotary Club Campsite
終點：大帽山茶水亭（連姐），扶輪扶輪公園營地

(click here for Google Maps location)



STAGE 9 – Route Twisk to Tin Fu Tsai

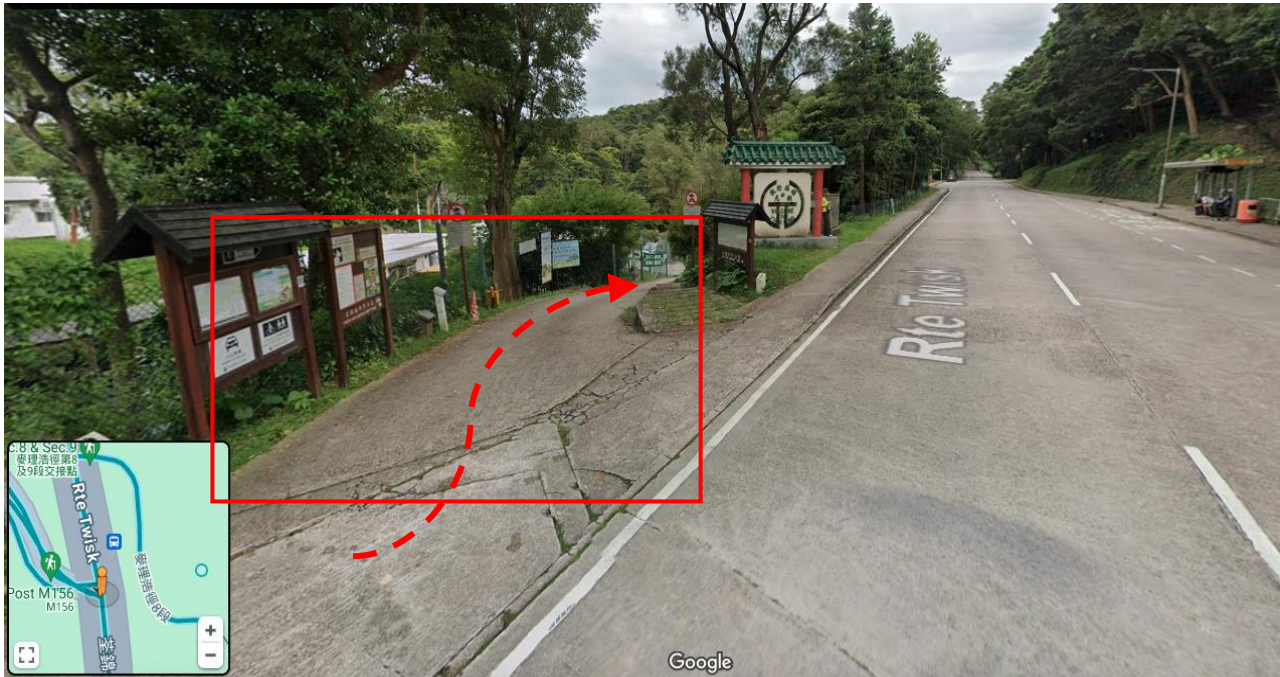
第九段：荃錦公路至田夫仔

Distance: 6.3KM

START: Route Twisk Junction, Distance post M156 (opposite to bus stop)

起點：荃錦公路，156 標距柱旁（巴士站對面）

(click here for Google Maps location)



FINISH: Tin Fu Tsai Campsite

終點：田夫仔營地

(click here for Google Maps location)



STAGE 10 – Tin Fu Tsai to Tuen Mun Town

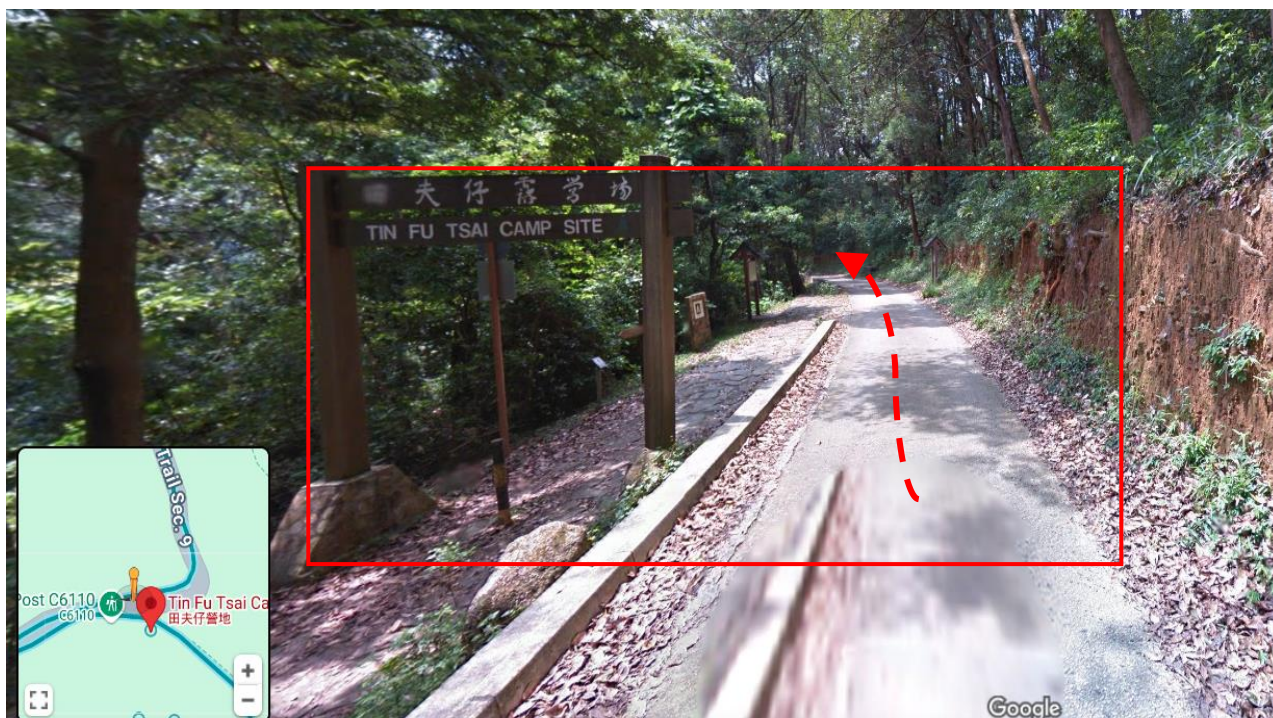
第十段：田夫仔至屯門市區

Distance: 15.6KM

START: Tin Fu Tsai Campsite

起點：田夫仔營地

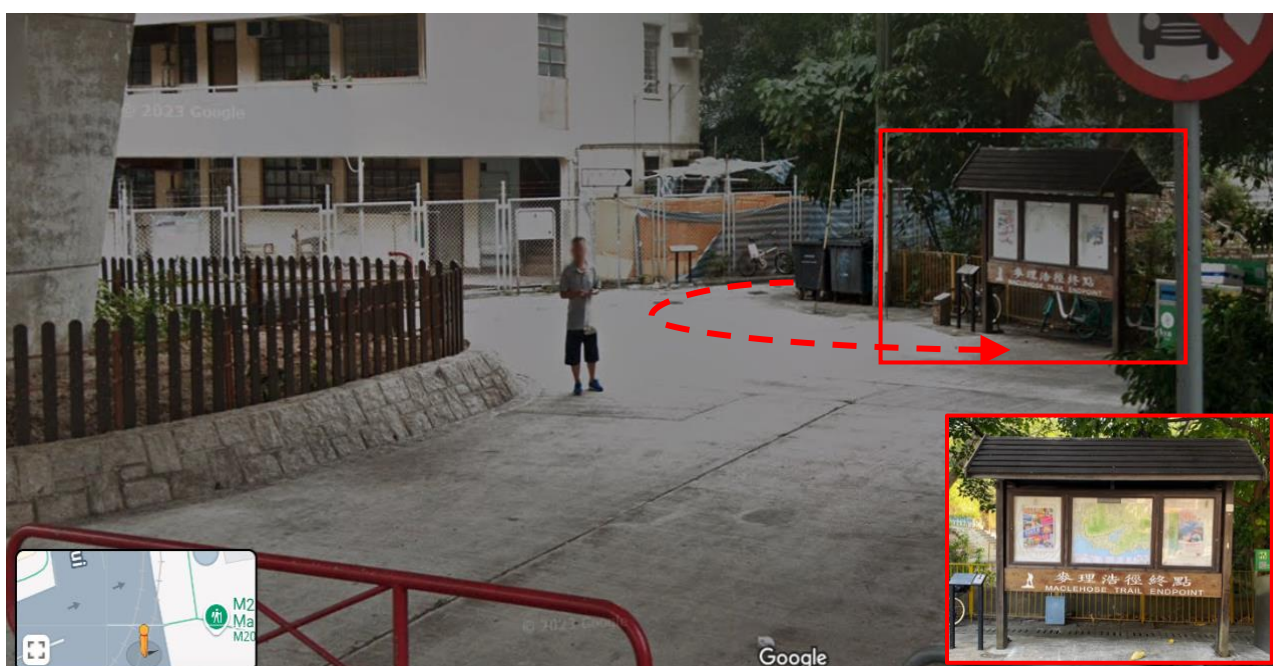
(click here for Google Maps location)



FINISH: Tuen Mun (Junction with Castle Peak Road)

終點：屯門（與青山公路交界處）

(click here for Google Maps location)



DISCLAIMER: This route guide is specified to match the START/FINISH points on the TRAILME App (MacLehose Trail). Usage of this guide to help users to navigate and find the start/finish points to detect START (GO! Button) & for auto-FINISH detection.

For further information on how to use the app, you may refer to our *User Guidelines*:
<https://www.trailme.com.hk/guidelines>

If any assistance is needed, you have a question, or would like to arise any inaccuracy within this guide, please reach out to:

TRAILME CUSTOMER SERVICE

Whatsapp: +852 9170 7444

Email: service@trailme.com.hk

Website: www.trailme.com.hk